

GCAS observations

(cloud filter not applied)

Top row: NO₂ column densities (linear scale)

Middle row: NO₂ column densities (log scale)

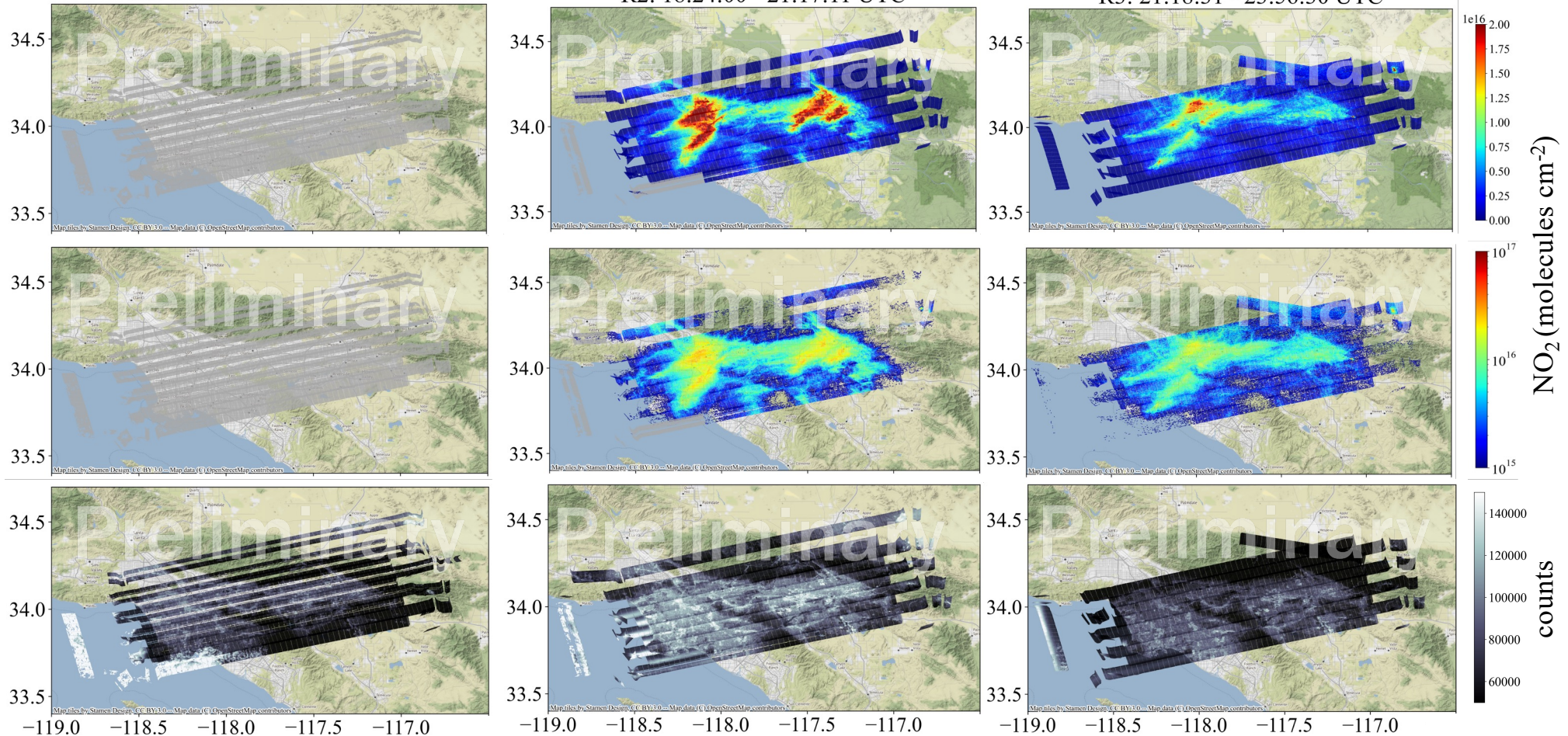
Bottom row: count rate in the NO₂ spectral window on detector
(indication for bright surfaces and clouds)

20230627 Tuesday SARP; Los Angeles, CA

R1: 15:36:00 - 18:23:58 UTC

R2: 18:24:00 - 21:17:11 UTC

R3: 21:18:31 - 23:56:30 UTC



Notes: R2 and R3 – fire in mountains. GCAS retrievals achieved sufficient quality after 18:36 UTC. NaNs are gray.

Daily AQI monitor readings from AirNow.gov

O₃ AQI: Good (0 – 50) in west and downtown LA, Moderate (51 – 100) near/in mountain region (Pasadena to Riverside)

PM_{2.5} AQI: Good (0 – 50) near coast and southern LA, Moderate (51 – 100) in downtown LA and Riverside regions.

STAQS PI: laura.m.judd@nasa.gov

Quicklook: mary.a.demetillo@nasa.gov

GCAS PI: scott.j.janz@nasa.gov